

# How to Setup a Printer

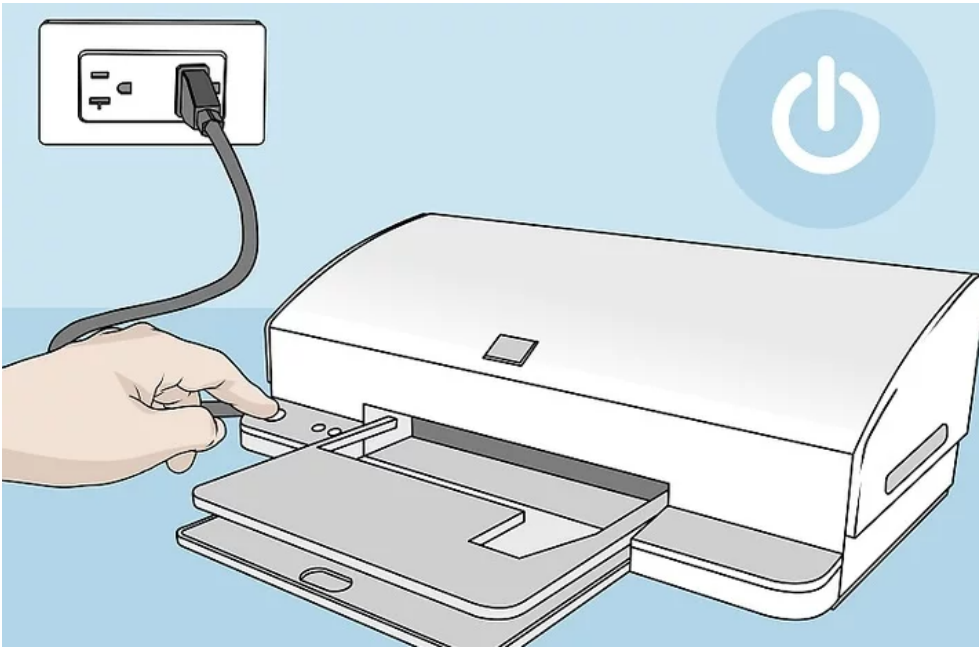
A few key steps to ensure that your printer is properly installed and ready to use.

Here's a general guide:

Plug in the printer's **power cable** to the **outlet**.

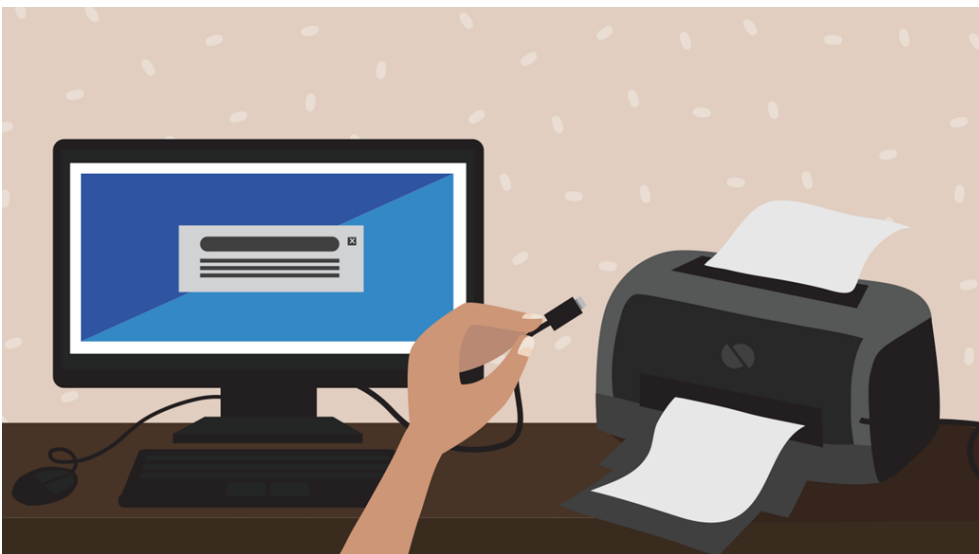


Before doing anything else, it's important to make sure your printer is **plugged in** and **ready**.



Connect the included cable (usually a **USB cable**) from the printer to the computer or laptop.

**Note:** The process will be different if you're using a **wireless** printer.



Revision #11

Created 6 June 2024 15:32:28 by IT Support

Updated 18 November 2024 03:13:39 by IT Support