

Account Registration

If you don't have an account yet, you can create one independently by clicking on the "[Create Account](#)" link from the [Login](#) page.

Hello, Ticket Support

No account yet? [Create Account](#)

A form will appear where you need to fill in all the details related to you.

Hello, New User!

☐ Not yet registered in company?

Employee ID:

Branch:

* Employee Name:

* Department:

Position:

* Role:

* Email Address: @mgmfoods.com.ph

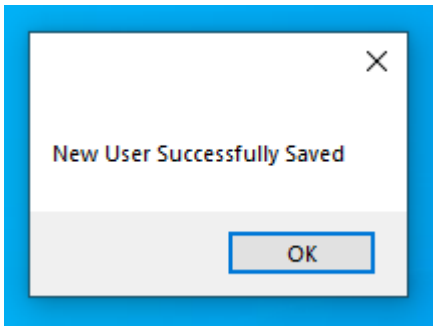
* Username:

* Password:

Confirm Password:

Submit

You will receive a [Notice](#) upon successful registration.



An email confirmation will be sent to your email upon successful registration

User Registration Receipt

IS

IT Support
To: IT Admin
Cc: IT Support

😊

↩ Reply


↩ Reply all

➡ Forward


📧

⋮

Thu 6/6/2024 9:42 AM

 **BW**

IT Ticketing System



Congratulations!


Registration Complete.

Hi ITAdmin,

You have successfully completed user registration on IT Ticketing System.
You can now use and create a ticket on every IT Job Tasks.

Thanks,

IT Department

 **BW**

Copyright © MGM Food and Commodities Corporation & MGM Bledwell Corporation

You can now proceed to [Login](#) on the system.

Revision #12

Created 6 June 2024 09:33:31 by IT Admin

Updated 8 June 2024 17:53:12 by IT Admin